



# PRODUCT OVERVIEW

2019

Esteemed clients and partners,

Welcome to **ruck Ventilatoren GmbH!**

Please discover in the following pages an excerpt from our product range. The complete portfolio is available on our webpage [www.ruck.eu](http://www.ruck.eu).

New in our program are the five certified smoke extract fan series, with a continuous operating temperature of 200 °C and 400 °C for 120 minutes.

In addition, we now offer you more flexibility with many of our fan series. You can now choose between the following motor types within the series: EC motors, multi steps or voltage controllable AC motors or frequency controllable three phase motors.

We offer this variety of product types for the benefit of our customers, so that they can always find the right fan for your application.

If you have further questions and suggestions, please send them by e-mail to [salesb@ruck.eu](mailto:salesb@ruck.eu)

Thank you very much,

**ruck Ventilatoren GmbH**

**ruck Ventilatoren GmbH** is a family owned company specialized in the production of high quality solutions for the climatization and ventilation sector.

In addition to a wide range of standard products such as tube and duct fans, we attach great importance to the development of new ideas and specific customer solutions.

Our aim is to offer highly efficient products that exceed future energy efficiency requirements.

All listed fans and air handling units comply with the already valid EU regulations 327/2011 (LOT11) and 1253/2014 (LOT6).



# SMOKE EXTRACT FANS



**NEW**

MPS...D F4

11.800 m<sup>3</sup>/h

- Dual-Use 400 °C / 120 min. and 200 °C continuous operation
- Double skinned, steel sheet casing with 40 mm mineral wool insulation
- Three possible discharge directions: left / right / up
- Backward curved radial impeller with screw tight hub and Taperlock shaft connection
- Casing base conceived with integrated drain



**NEW**

MPC...D F4 T

17.500 m<sup>3</sup>/h

- Dual-Use 400 °C / 120 min. and 200 °C continuous operation
- Innovative motor cooling concept
- Double skinned, steel sheet casing with 30 mm mineral wool insulation
- Three possible exhaust directions: right / left / upwards
- Backward curved radial impeller with screw tight hub and Taperlock shaft connection
- Casing base conceived with integrated drain



**NEW**

MPC...D F4 TI

12.000 m<sup>3</sup>/h

- Dual-Use 400 °C / 120 min. and 200 °C continuous operation
- Double skinned, steel sheet casing with 30 mm mineral wool insulation
- Linear airflow
- Backward curved radial impeller with screw tight hub and Taperlock shaft connection
- Integrated drain



**NEW**

DVN / DVNI...D F4

18.500 m<sup>3</sup>/h

- Dual-Use 400 °C / 120 min. and 200 °C continuous operation
- Innovative motor cooling concept
- Sound insulated casing (DVNI)
- Casing made of seawater-resistant aluminium, base plate and inlet cone are made of galvanized sheet steel
- Backward curved radial impeller with screw tight hub and Taperlock shaft connection
- Integrated grease pan with drain



**NEW**

DHN...D F4

15.700 m<sup>3</sup>/h

- Dual-Use 400 °C / 120 min. and 200 °C continuous operation
- Innovative motor cooling concept
- Casing made of seawater-resistant aluminium, base plate and inlet cone are made of galvanized sheet steel
- Backward curved radial impeller with screw tight hub and Taperlock shaft connection

# EXTRACT FANS



MPS...EC

6.900 m<sup>3</sup>/h

- For grease impregnated kitchen exhaust air, up to 120 °C
- Energy saving, steplessly controllable EC motors
- Motor outside the airflow, acc. VDI 2052
- Double wall housing, with thermal insulation
- Casing base conceived with integrated drain
- Three possible exhaust directions: right / left / upwards
- Backward curved centrifugal impeller



MPS...E /...D

11.800 m<sup>3</sup>/h

- For grease impregnated kitchen exhaust air, up to 120 °C
- With voltage or frequency controllable AC motors
- Motor outside the airflow, acc. VDI 2052
- Double wall housing, with thermal insulation
- Casing base conceived with integrated drain
- Three possible exhaust directions: right / left / upwards
- Backward curved centrifugal impeller



MPC...ECT /...ECT I

7.600 m<sup>3</sup>/h

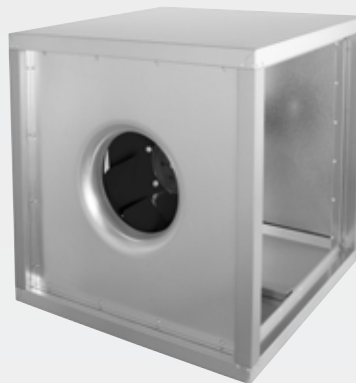
- Max. medium temperature 120 °C
- Energy saving, steplessly controllable EC motors
- Motor outside the airflow, acc. VDI 2052
- Removable side walls for variable discharge direction
- Linear airflow (... ECT I)
- Casing base conceived with integrated drain
- Double wall housing, with thermal insulation
- Backward curved centrifugal impeller



MPC...ET /...DT /...DT I

17.500 m<sup>3</sup>/h

- Max. medium temperature 120 °C
- With voltage or frequency controllable AC motors
- Motor outside of airflow, acc. VDI 2052
- Removable side walls for variable discharge direction
- Casing base conceived with integrated drain
- Double wall housing, with thermal insulation
- Backward curved centrifugal impeller



MPC...E /...D /...EC

17.400 m<sup>3</sup>/h

- Max. medium temperature 80 °C
- Energy saving, steplessly controllable EC motors
- With voltage or frequency controllable AC motors
- Three possible exhaust directions: right / left / upwards
- Double wall housing, with thermal insulation
- Backward curved centrifugal impeller



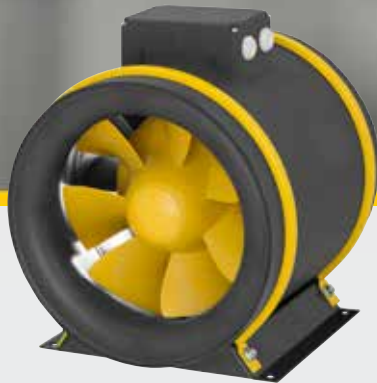
MPX...E /...D

6.700 m<sup>3</sup>/h

- Max. medium temperature 80 °C
- With voltage or frequency controllable AC motors
- Motor outside the airflow acc. VDI 2052
- Single wall housing with integrated mounting bracket
- Casing base conceived with integrated drain

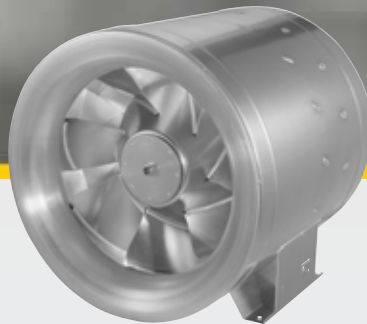


# TUBE FANS



**ETAMASTER...E /...M /...EC** 5.700 m<sup>3</sup>/h

- Highest aerodynamic efficiency through computer optimized, three-dimensionally shaped impeller and guide vanes
- Energy saving, steplessly controllable EC motors
- With asynchronous motors (EM...E)
- With 3-step AC motors
- The motor is protected in the hub area and does not influence the airflow
- Casing made out of corrosion resistant plastic



**ETALINE...EC /...D /...M /...E** 23.100 m<sup>3</sup>/h

- High efficiency diagonal fan
- Three-dimensionally shaped impeller and guide vanes
- Energy saving EC motors or asynchronous three-phase motors
- Voltage controllable or 3-step AC motors
- Motor is protected in the hub area
- Casing made out of plastic, galvanized steel sheet or aluminum



**EM DUO...EC** 4.600 m<sup>3</sup>/h

- Sound insulated tube fan with redundant operation
- Built-in ETAMASTER diagonal fans, with the highest aerodynamic efficiency
- Three-dimensionally shaped impeller and guide vanes
- Energy saving, steplessly controllable EC motors
- The motor is protected in the hub area and does not influence the airflow
- Casing made out of galvanized steel sheet



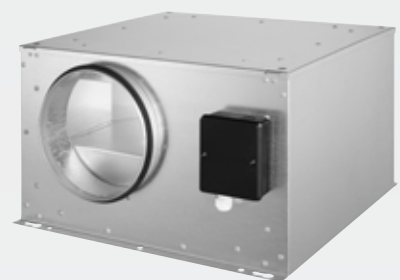
**RS/...EC** 2.000 m<sup>3</sup>/h

- Energy saving, steplessly controllable EC motors
- Voltage controllable AC motors
- High quality steel sheet housing, RAL 7035 (light grey) powder coated
- Backward curved centrifugal impeller



**EMIX...M/...EC** 3.200 m<sup>3</sup>/h

- High efficiency, sound insulated diagonal fan
- Built-in ETAMASTER diagonal fans, with the highest aerodynamic efficiency
- Energy saving, steplessly controllable EC motors
- With 3-step AC motors
- The motor is protected in the hub area and does not influence the airflow
- Casing made out of galvanized steel sheet



**ISOR /...EC** 4.400 m<sup>3</sup>/h

- Fully insulated housing
- Energy saving, steplessly controllable EC motors
- With voltage controllable AC motors
- Swing-out fan unit
- Backward curved centrifugal impeller

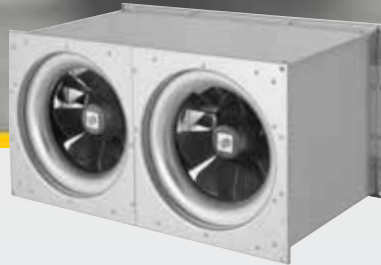
# DUCT FANS



EMKI...EC

10.410 m<sup>3</sup>/h

- With high efficiency ETAMASTER diagonal fans
- Energy saving, steplessly controllable EC motors
- Sound optimized housing
- Removable inspection cover



ELKI

10.050 m<sup>3</sup>/h

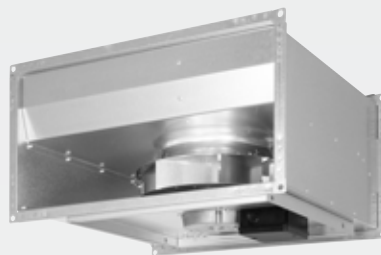
- Integrated ETALINE diagonal fan
- With voltage controllable AC motors
- Sound optimized housing made out of galvanized steel sheet
- Removable inspection cover



KVRI /...EC

11.505 m<sup>3</sup>/h

- In EC or AC version
- Sound insulated housing
- Swing-out fan unit for cleaning and maintenance
- With peripheral, 20 mm wide standard flange
- Backward curved centrifugal impeller

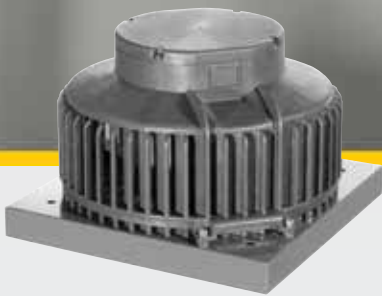


KVR /...EC

12.460 m<sup>3</sup>/h

- Energy saving, steplessly controllable EC motors
- With voltage controllable AC motors
- Swing-out fan unit for easy cleaning and maintenance
- With peripheral, 20 mm wide standard flange
- Backward curved centrifugal impeller

# ROOF FANS



**DHA/...P**

**900 m³/h**

- Horizontal discharge
- AC-motors, voltage controllable
- With device switch (DHA...P)
- Weather resistant plastic ASA, RAL 7012
- Swing-out fan unit
- Backward curved centrifugal impeller



**DHA...ECP/...EC CP**

**1.300 m³/h**

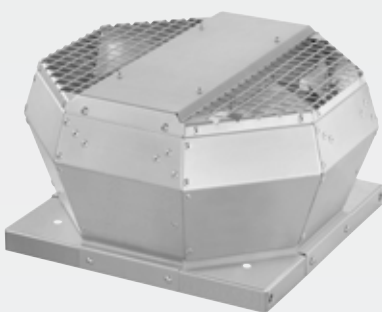
- Horizontal discharge
- Energy saving, steplessly controllable EC motors
- Constant pressure control (DHA...EC CP)
- With device switch
- Weather resistant plastic ASA, RAL 7012
- Swing-out fan unit
- Backward curved centrifugal impeller



**DHA...P/...EC/...ECP**

**16.300 m³/h**

- Horizontal discharge
- AC motors, voltage controllable
- Energy saving, steplessly controllable EC motors
- With device switch (DHA...P/...ECP)
- Housing made of seawater-resistant aluminium AlMg3
- Swing-out fan unit
- Backward curved centrifugal impeller



**DVA/...P**

**10.900 m³/h**

- Vertical discharge
- AC motors, voltage controllable
- With device switch (DVA...P)
- Housing made of seawater-resistant aluminium AlMg3
- Swing-out fan unit
- Backward curved centrifugal impeller



**DVA...EC/...ECC/...ECP/...ECCP**

**14.100 m³/h**

- Vertical discharge
- Energy saving, steplessly controllable EC motors
- Integrated constant pressure control (DVA...ECC/...ECCP)
- With device switch (DVA...ECP/...ECCP)
- Housing made of seawater-resistant aluminium AlMg3
- Swing-out fan unit
- Backward curved centrifugal impeller



**DVN/DVNI...E/...D/...EC**

**14.300 m³/h**

- For grease impregnated kitchen exhaust air, up to 120 °C
- Motor outside the airflow, acc. VDI 2052
- Sound insulated housing (DVNI) made of seawater-resistant aluminium AlMg3
- Integrated grease pan, with drain
- EC motors or AC motors, voltage or frequency controllable
- Swing-out fan unit
- Backward curved centrifugal impeller



## RECUPERATIVE HEAT RECOVERY



### ETA K...F

The ultracompact ETA K...F device is suitable for ceiling mounting in office buildings, restaurants, shops or cafes.

The ETA KOMPAKT units are equipped with a highly efficient counter cross heat exchanger and a heat recovery rate of up to 90 %.

Heat recovery is already equipped in the standard version with a bypass for free night cooling in summer or antifreeze in winter. All devices have an integrated factory tested microprocessor control. The use of highly efficient EC fans is a matter of course.



### ETA K...H

The ETA K...H, with horizontal air connections, is suitable for installation in the technical room. With appropriate accessories also for outdoor installation.



### ETA K...V

The ETA K...V compact ventilation units, with vertical air connections, are the ideal solution for installation in the technical room with their small footprint.

## REGENERATIVE HEAT RECOVERY



ROTO K...H

ROTO K...H with horizontal air connections can be installed in technical rooms, but with the appropriate accessories it is also suitable for outdoor installation.

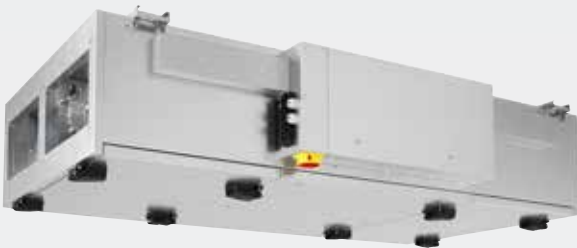
The ROTO KOMPAKT series has a built-in rotary heat exchanger with a heat recovery rate of 80 %. The humidity recovery of 60 % ensures a comfortable room climate in winter as well. Used are EC fans with pressure and volume flow control.



ROTO K...V

The compact construction with the vertical air connections, offers flexible installation possibilities.

## ACCUFLOW



ACCUFLOW K...F

The ACCU K...F series is designed for ceiling installation.

The high-performance heat recovery of over 90% consists of two static storage masses, through which outdoor air and extract air pass alternatively via a damper system.



ACCUFLOW K...H

The ACCU K...H series with horizontal air connections can be installed in a technical room.

## COMPACT AHU WITHOUT HEAT RECOVERY



### SL

The extract and supply units of the SL ranges are used for applications with airflow rates between 1.500 m<sup>3</sup>/h and 4.400 m<sup>3</sup>/h. The integrated control of the air supply units allows the connection of an extract unit for a demand-oriented ventilation system.

## AIR SUPPLY UNITS WITH ELECTRIC HEATING



### FFH...EC

The compact design makes the new FFH range stand out. Equipped with EC motors and an integrated control, it is also easy to install.

LOT6



2018

CONSTANT



air volume



aeroefficiency

ec



technology



## **ruck Ventilatoren GmbH**

Max-Planck-Str. 5  
D-97944 Boxberg

Tel. +49 (0)7930 9211-300  
Fax +49 (0)7930 9211-166

[www.ruck.eu](http://www.ruck.eu)  
[info@ruck.eu](mailto:info@ruck.eu)

