



LOT6

2018

ec

technology



aeroefficiency

SLIGHTLINE

COMPACT AIR SUPPLY / EXTRACT UNITS

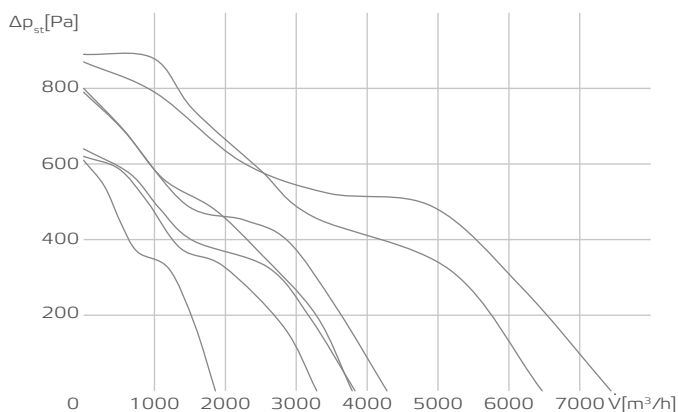
THE NEW SL SERIES

The new Slightline SL supply and extract air units have been completely revised and meet the requirements of the ERP 2018. In addition to the basic version with heating coil, a version with additional cooler is also available. All air supply units have integrated and fully wired controls.



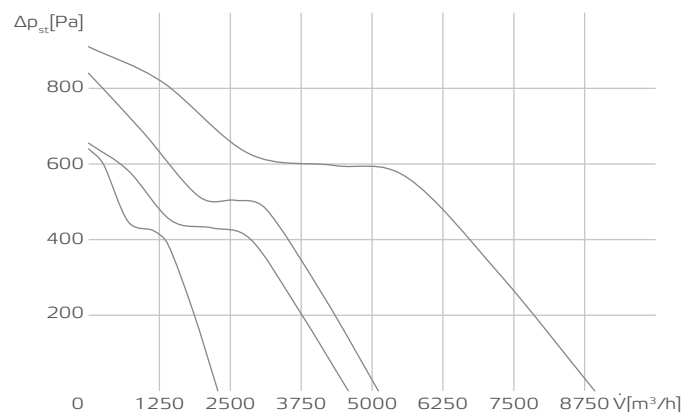
SL...E AIR SUPPLY UNITS WITH CONTROLS

- Air supply units for ceiling mounting
- Operation at outside air temperatures $< -20^{\circ}\text{C}$ only allowed when the equipment is installed indoor
- Constant speed controlled EC fans
- Integrated controls, prewired and plug-in ready
- Heater PWW
- Panel filter M5
- Maximum airflow rate of $7400\text{ m}^3/\text{h}$



SL...E AIR EXTRACT UNITS WITHOUT CONTROLS

- Extract unit for ceiling mounting
- EC motor
- Without controls
- Speed controllable
- Maximum airflow rate of $8925\text{ m}^3/\text{h}$



SMART AND COMPACT

APPLICATION

For 100 % fresh air supply and where heat recovery is not required. For the supply and extract ventilation of rooms where the emission sources are human metabolism or building materials, e.g. offices, public areas, meeting rooms.

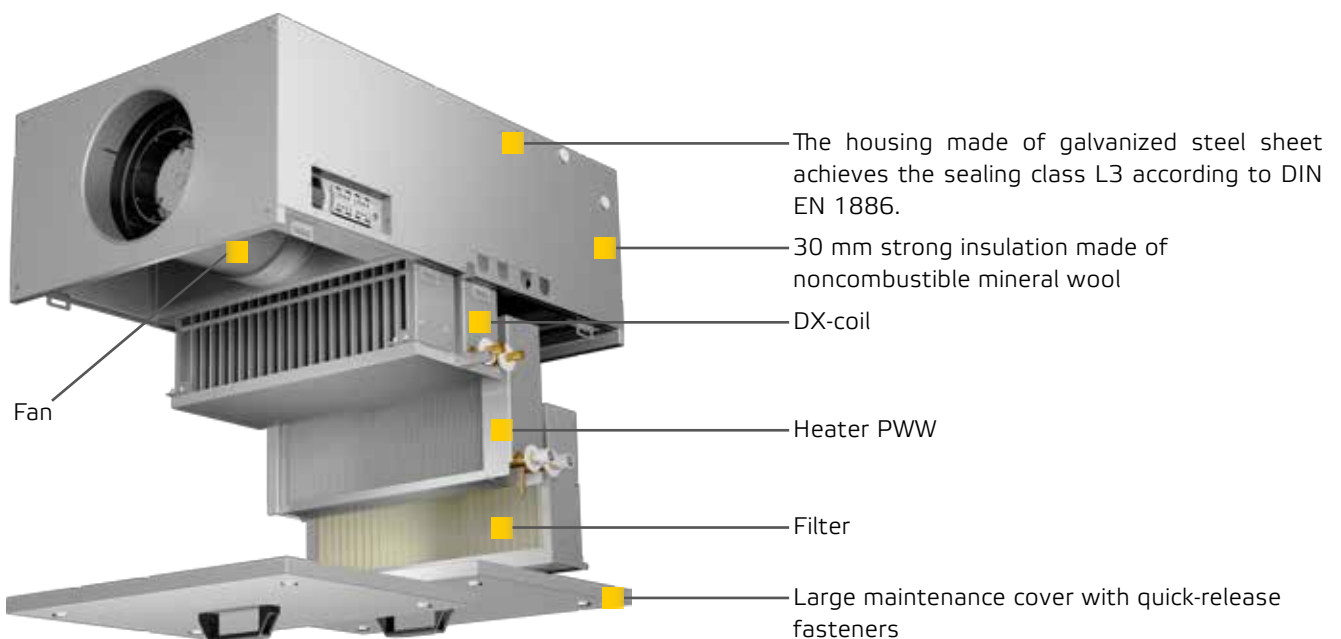
CONTROLS

The regulation of the SL series allows a speed-constant, 3-step fan operation. The desired speed step can be freely selected via the external control unit. Alternatively, a constant pressure control can be set with additional pressure sensors. The integration of an extract air fan is also possible in the standard version at any time. The timer with day and week program allows for customized operation, filter monitoring is integrated in the external control unit. Parallel to the day program, a basic ventilation, or even a night reduction can be selected. For temperature control, the supply or room air temperature control modes are available.

EXTERNAL SENSORS (OPTIONAL)

- External control 0-10V
- External enable contact
- CO₂, VOC, SEN P1000
- Occupancy sensor
- Fire detector

DEVICE EXAMPLE INCLUDING COMPONENTS



OUR PRODUCT RANGE

IN LINE TUBE FANS

ETALINE and ETAMASTER, the No. 1 in saving energy.



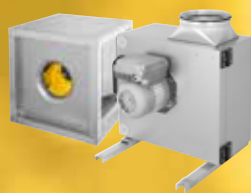
DUCT FANS

Backward curved centrifugal fans, sound insulated, compact diagonal fans.



EXHAUST FANS

For industrial or kitchen exhaust, up to 120 °C.



ROOF FANS

With horizontal and vertical discharge, up to 120 °C.



COMPACT AHU

With counter flow heat exchanger with more than 90% heat recovery efficiency and EC fans. Available with horizontal or vertical air guidance respectively flat units for suspended ceiling mounting.



COMPACT AHU

With rotary heat exchanger with up to 80% heat recovery efficiency and EC fans. Available with horizontal or vertical air guidance.



ruck Ventilatoren GmbH

Max-Planck-Str. 5
D-97944 Boxberg

Tel. +49 (0)7930 9211-300
Fax +49 (0)7930 9211-166

www.ruck.eu
info@ruck.eu

