

thermokon®

HOME OF SENSOR TECHNOLOGY

CONFERENCE VENUES

BANKS

APARTMENTS

HOSPITALS

OFFICES

EasySens®

The Self-Powered, Intelligent Wireless System



EFFICIENT NAVIGATION
FOR BUILDING AUTOMATION



Room Planning with EasySens®





EasySens®

The Self-Powered, Intelligent Wireless System



The wireless EnOcean based system **EasySens®** enables a networked building automation – self-powered, intelligent and maintenance-free. Thus, **EasySens®** offers best possible flexibility for realizing individual requirements in new buildings and refurbishments.

EasySens® – how it works:



Compatible with:



ADVANTAGES.



- » Cost effective with comfort by Energy Harvesting (energy production from the sensor environment)
- » High flexibility with sensor location, fast and easy installation
- » Reduction of fire load – no need for wires
- » Easy integration into existing buildings without the need for wires
- » Direct mounting at representative measuring points
- » Compatibility to other manufacturers by using the international standard (IEC 14543-3-10)

airConfig

COMMISSIONING MADE EASY!

- » Easy configuration via RF
- » Setting of configuration properties – e.g. waking-up cycles, measuring values or functions of input/outputs – configuration parameters are taken over into the device setting instantly
- » Saving of configuration properties
- » Clear and centralized availability of system information
- » Easy maintenance and support



airConfig and airScan – how it works (videos)

airScan

MEASURING AND MONITORING

- » Transmitting range planning and determination of optimal device location
- » Monitoring function for easy evaluation of RF telegrams
- » Logging, repeater function and possibility of remote maintenance
- » Status detection of product ID, field strength and manufacturers of integrated products
- » Data export for further process/analysis in CSV-, XML- or XLS-File



NOW AVAILABLE:

RADIO FANCOIL/ROOM CONTROLLER – JOY SR

- » integration into existing EasySens® applications
- » controlling valve actuators and 0..10 V EC motors
- » learn-in of EasySens® transmitters (e.g. temperature sensors / motion detectors / door and window contacts)



Temperature / Humidity



SR07 / SR07 rH



SR04 / SR04 rH

Door / Window Contacts

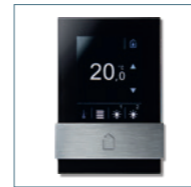


SRG02



SRW01

Room Operating Units



thanos SR S black



SR06 LCD



JOY SR

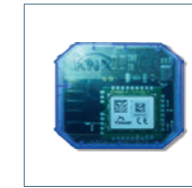
Gateways



STC65-Modbus



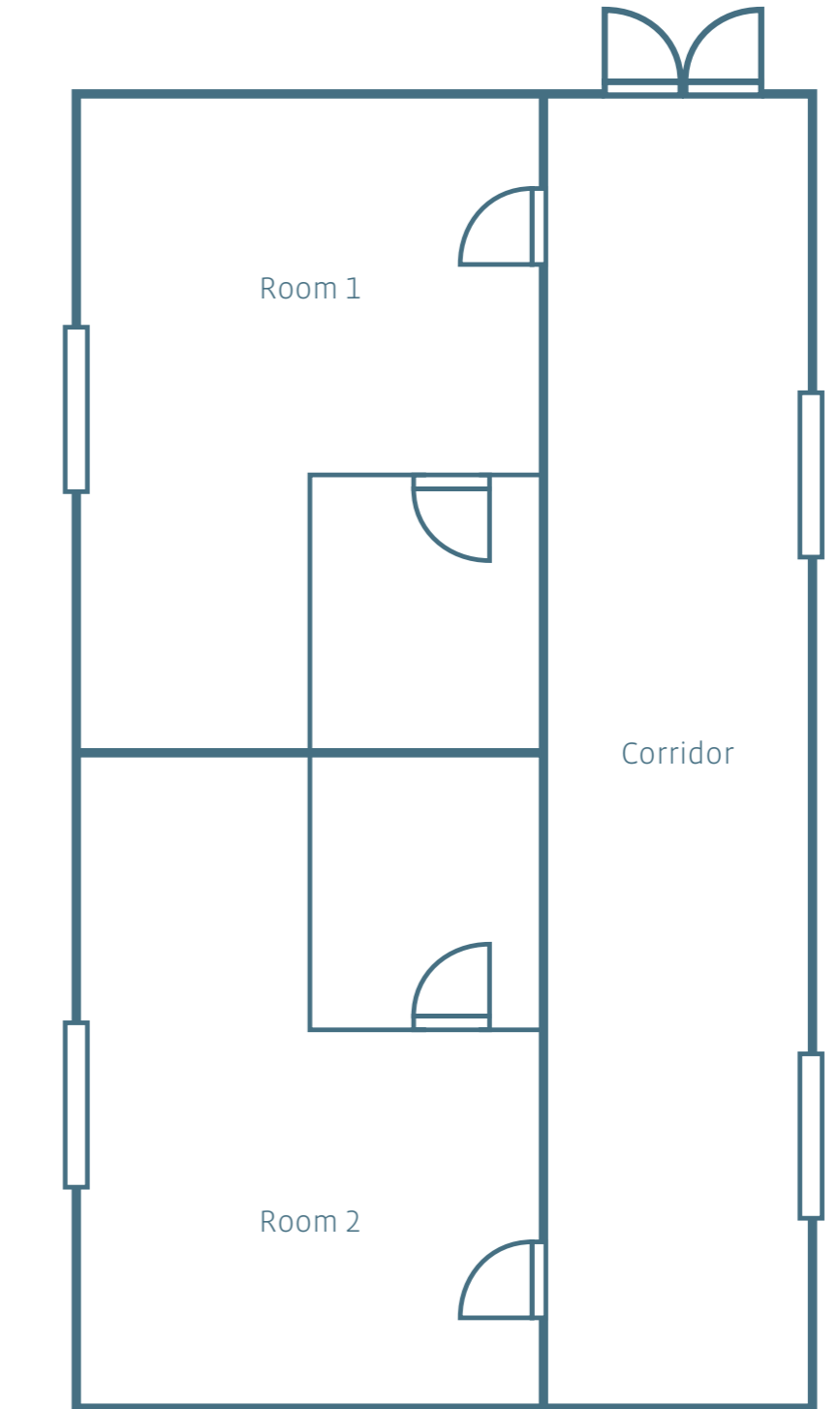
STC-Ethernet



STC-KNX UP



STC-BACnet IP



SR65 Li



SR-MOC Solar



SR-MDS



55x55



Mini



SR-KCS02



SR04 CO2

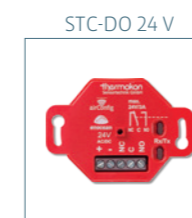
Light and Motion

Switches

Air Quality



SAB+



STC-DO 24 V



STC-DO8

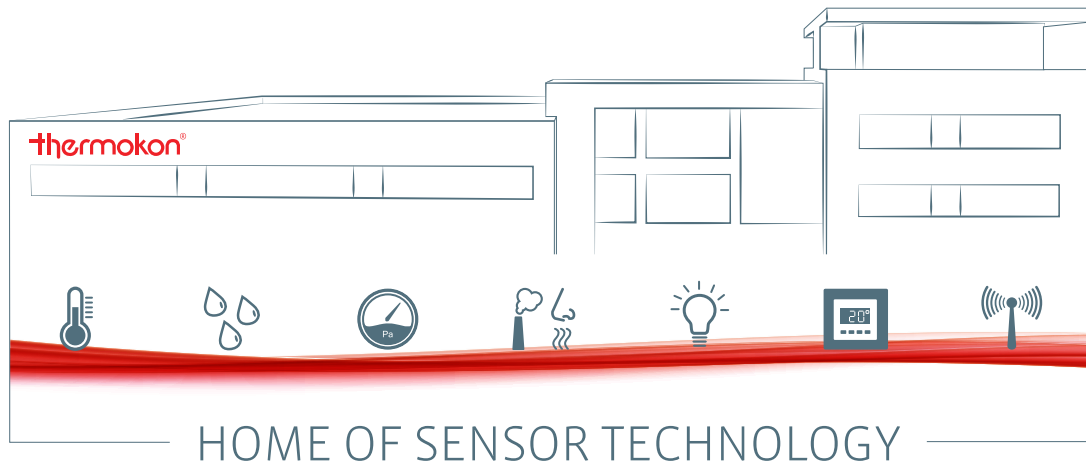


SRC-ADO

Actuators

thermokon®

HOME OF SENSOR TECHNOLOGY



For more than 30 years Thermokon has been standing for improvements of intelligent buildings with engineering, innovation and quality “Made in Germany”. Thanks to the development and production of advanced sensors and sensor systems we are creating a benefit to our customers worldwide. Efficiency, sustainability and openness to new ideas are also in the focus of our attention as well as a close cooperation and continuous dialogue with our clients.



Thermokon Sensortechnik GmbH

Platanenweg 1 | 35756 Mittenaar | GERMANY
Phone: +49 2778 6960-0 | Fax: +49 2778 6960-400
email@thermokon.de | www.thermokon.com

